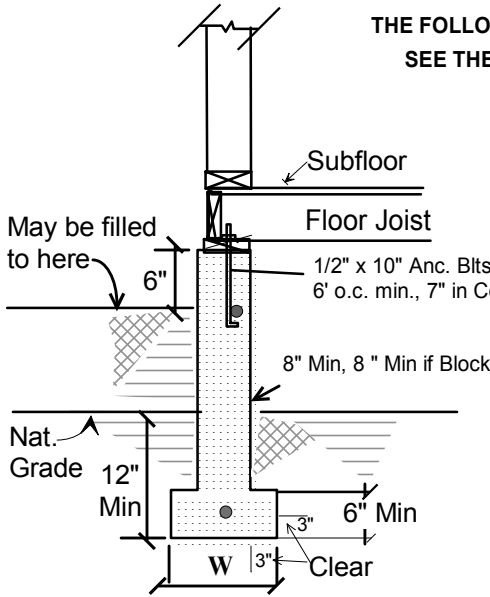


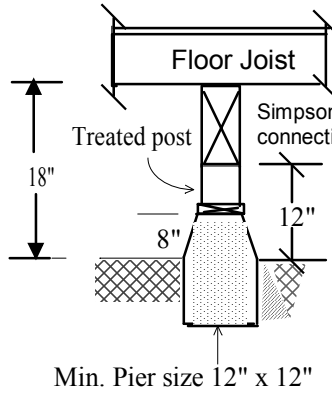


FOUNDATION DETAIL

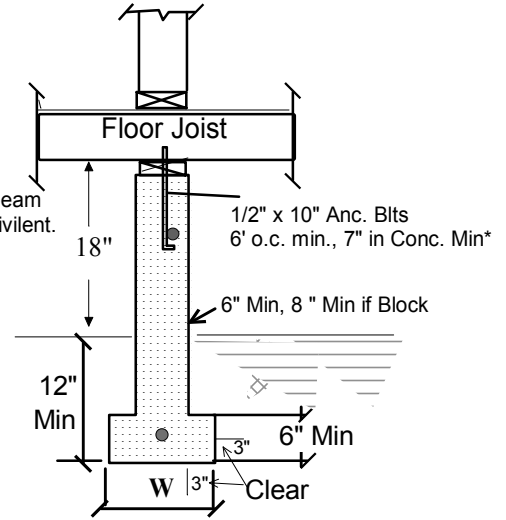
THE FOLLOWING ARE EXAMPLES OF POSSIBLE FOUNDATION DETAILS.
 SEE THE CRC AND CBC FOR ALTERNATE FOUNDATION DESIGNS.



Ext. Foundation

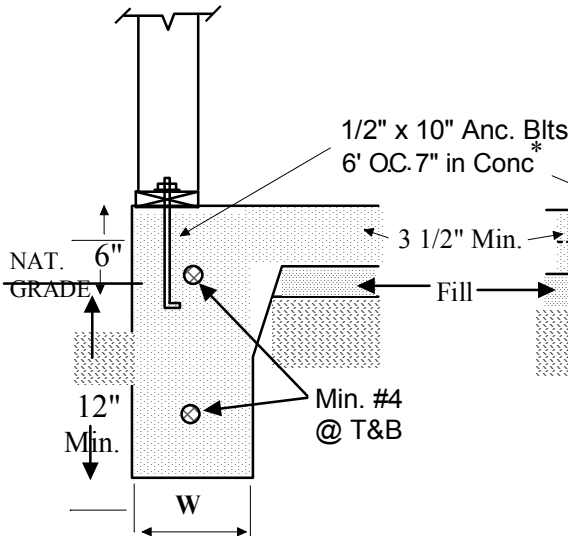


Pier

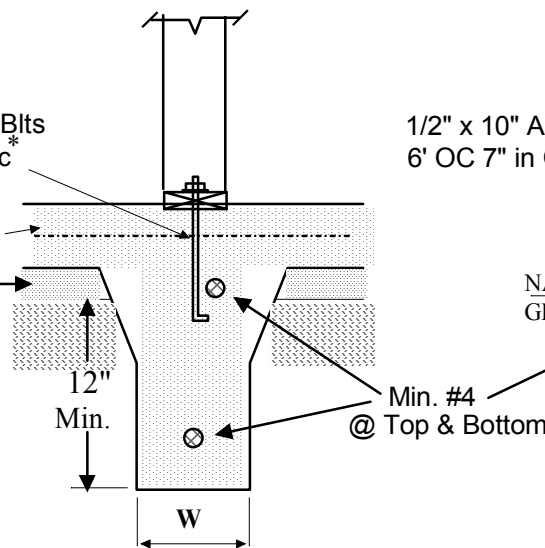


Cont. Bearing Wall

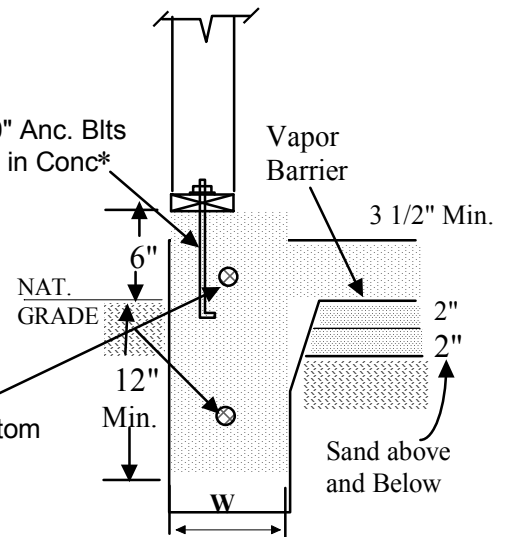
SLAB FLOOR CONSTRUCTION



Minimum Slab Const.



Int. Bearing Wall



Recommended Slab Const.

"W" = Width. Minimum width 12", 15" for two story, 23" for three story.

Notes - Anchor bolts are required to be min. 1/2", shall be embedded at least 7", shall be spaced not more than 6' o.c. There shall be a min. of 2 bolts per piece with 1 bolt located not more than 12" or less than 4" from each end. Each bolt shall have a min. plate washer of measuring 3" x 3". Diagonal slots allowed. Min 3" clearance for reinforcing steel in the earth.